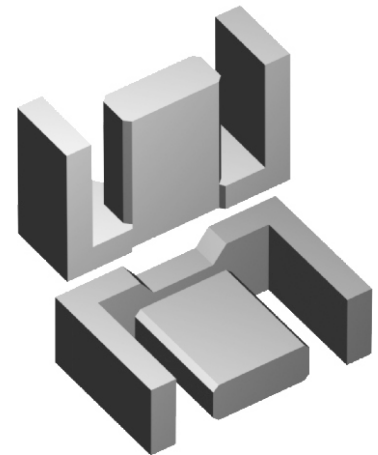
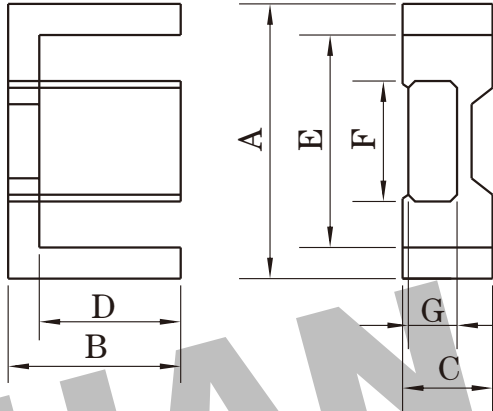


Dimension: (UNIT:mm)

A	20.0 ± 0.55
B	10.0 ± 0.15
C	6.65 ± 0.15
D	7.7 ± 0.25
E	15.4 ± 0.5
F	8.9 ± 0.2
G	3.6 ± 0.15
H	



Test conditions

AL: F=10.0KHz U=0.3V N=10Ts

Effective parameter

C1(mm) ⁻¹	Ae(mm ²)	Le(mm)	Ve(mm ³)	Weight(g)
1.52	31.0	47.0	1460	≈3.5

Core sets

AL measured in combination with a non-gapped core half, clamping force for AL measurements, 20±10N unless otherwise stated.

Properties of core sets under power conditions

Grade	AL (nH)	μe	AIR GAP μm	Type number
P3	63 ± 3%	≈ 76	≈ 960	EFD20-P3
	100 ± 3%	≈ 121	≈ 510	EFD20-P3
	160 ± 5%	≈ 193	≈ 280	EFD20-P3
	250 ± 8%	≈ 302	≈ 160	EFD20-P3
	315 ± 10%	≈ 380	≈ 120	EFD20-P3
	1300 ± 25%	≈ 1570	≈ 0	EFD20-P3
P4	63 ± 3%	≈ 76	≈ 960	EFD20-P4
	100 ± 3%	≈ 121	≈ 510	EFD20-P4
	160 ± 5%	≈ 193	≈ 280	EFD20-P4
	250 ± 8%	≈ 302	≈ 160	EFD20-P4
	315 ± 10%	≈ 380	≈ 120	EFD20-P4
	1300 ± 25%	≈ 1570	≈ 0	EFD20-P4
HQ2KA	1200 ± 25%	≈ 1450	≈ 0	EFD20-HQ2KA
HQ2K	63 ± 3%	≈ 76	≈ 960	EFD20-HQ2K
	100 ± 3%	≈ 121	≈ 510	EFD20-HQ2K
	160 ± 5%	≈ 193	≈ 280	EFD20-HQ2K
	250 ± 8%	≈ 302	≈ 160	EFD20-HQ2K
	315 ± 10%	≈ 380	≈ 120	EFD20-HQ2K
	1200 ± 25%	≈ 1450	≈ 0	EFD20-HQ2K
P5	920 ± 25%	≈ 1100	≈ 0	EFD20-P5

Grade	B (mT) at	Core loss (w) at			
	H=250 A/m F=25KHz T=100°C	F=25 KHz B=200mT T=100°C	f=100 KHz B=100mT T=100°C	F=100 KHz B=200mT T=100°C	F=400 KHz B=50mT T=100°C
P3	≥ 330	≤ 0.16	≤ 0.17	-	-
P4	≥ 330	-	≤ 0.13	≤ 0.8	-
HQ2KA	≥ 330	-	≤ 0.1	≤ 0.6	≤ 0.26
HQ2K	≥ 315	-	≤ 0.17	-	≤ 0.28
P5	≥ 300	-	-	-	≤ 0.13

Properties of core sets under power conditions (continued)

Grade	B (mT) at	Core loss (w) at			
	H=250 A/m F=25KHz T=100°C	F=500 KHz B=100mT T=100°C	F=1.0 Mhz B=30mT T=100°C	F=1.0MHz B=50mT T=100°C	F=3.0MHz B=10mT T=100°C
P3	≥ 330	-	-	-	-
P4	≥ 330	-	-	-	-
HQ2KA	≥ 330	≤ 0.5	-	-	-
HQ2K	≥ 315	-	-	-	-
P5	≥ 300	≤ 0.2	≤ 1.5	-	-

Note:

- 1: Document is the property of FUAN Inc & is not allow to be duplicated without authorization
- 2: RoHS compliant.